

SITUATION UPDATE

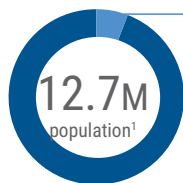
In 2022, Mozambique was affected by three natural disasters during the rainy and cyclonic season (October 2021 to April 2022). Tropical Cyclone Gombe hit the country on 11 March as a Category 3 cyclone in the wake of two extreme weather events - Tropical Storm Ana and Tropical Depression Dumako - which had struck six weeks earlier, affecting 200,000 people.

Tropical Cyclone Gombe left a trail of severe damage and devastation on its path. The cyclone affected 736,000 people and temporarily displaced some 23,000 people, causing extensive damage to infrastructures. While the Government's preparedness and response efforts along with the response by humanitarian

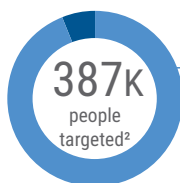
partners played a critical role in preventing further loss of lives and quickly responding to the unfolding needs of the displaced people who had lost everything, the rising humanitarian needs outstripped the capacity of humanitarian organizations to respond to the needs brought by the disaster.

The Gombe Emergency Response Plan (ERP) seeks US\$ 48.07M to deliver life-saving, life-sustaining assistance and protection to 387,000 people in Nampula, Sofala and Zambezia provinces from April to September 2022. At the end of August the ERP is 19 per cent funded having received US\$ 9.1 million from seven donors.

KEY FIGURES



697k people in need
6% of population



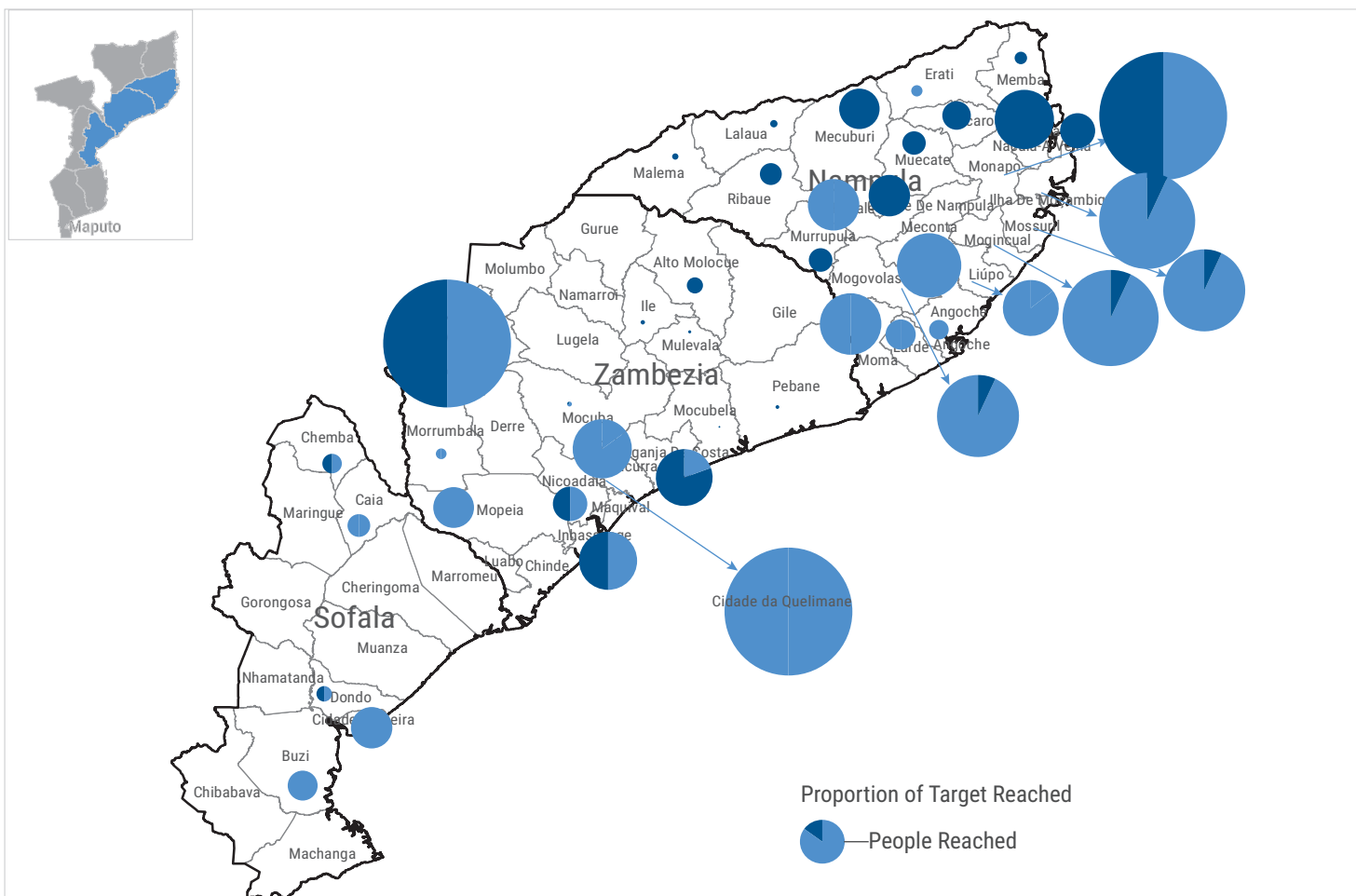
366k people reached³
94% of target



- 1 INGOs (6%)
- 10 NNGOs (55%)
- 7 UN (39%)

Number of organizations who have been responding up to August 2022

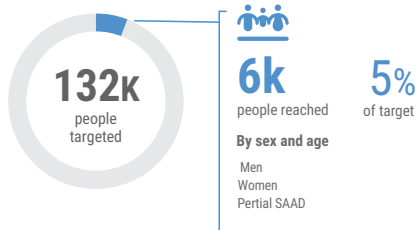
PEOPLE TARGETED AND REACHED BY DISTRICT BETWEEN MARCH 2022 AND AUGUST 2022



RESPONSE OVERVIEW4

CCCM

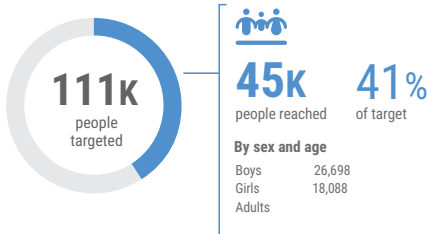
283k people in need



2,759 People with access to CCCM services

EDUCATION

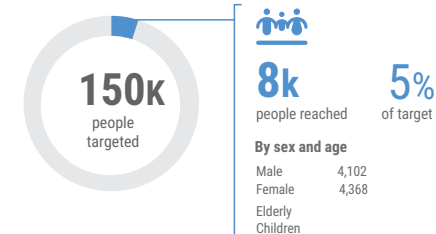
163k people in need



43,326 Children reached through setting of temporary learning space and distribution of learner kits

SHELTER /NFIs

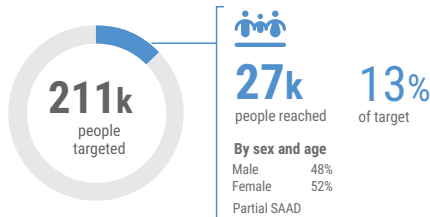
624k people in need



8,470 People assisted with basic emergency shelter and NFIs kit

FOOD SECURITY & LIVELIHOODS

697k people in need

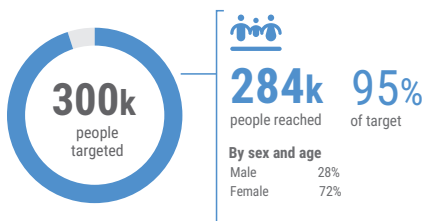


217,813 People reached with food distribution

200,540 People reached with livelihood assistance

HEALTH

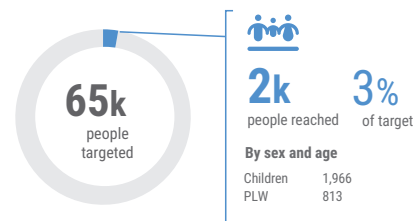
346k people in need



280,568 People reached with emergency medical kits

NUTRITION

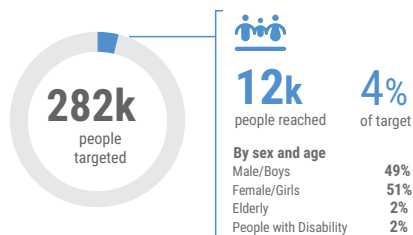
130k people in need



1,966 Children under 5 children admitted for treatment (SAM and MAM) in the management of acute malnutrition
813 Pregnant and Lactating Women (PLWs) admitted for treatment (SAM and MAM)

PROTECTION

376k people in need



1,682 IDPs accessed services on civil documentation

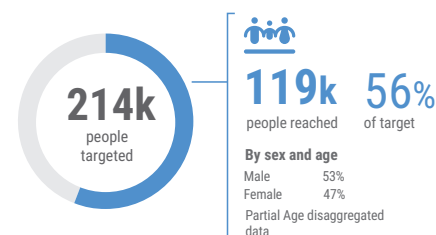
386 Women and girls provided with psychosocial support at women and girls safe spaces

112 GBV survivors provided with assistance and support (eg. Health care, MHPSS)

- General protection**
11,742 People reached with protection services
- Child protection**
0 Children reached
- Gender-based violence**
0 People reached
- PSEA**
0 People reached PSEA services

WASH

268k people in need



44,250 People with access to safe drinking water

20,910 People with critical WASH supplies

23,490 People reached with safe and appropriate sanitation facilities

2022 GOMBE ERP FUNDING (as of 31 August)⁵

\$48.07_M

Gombe ERP requirements

\$9.1_M

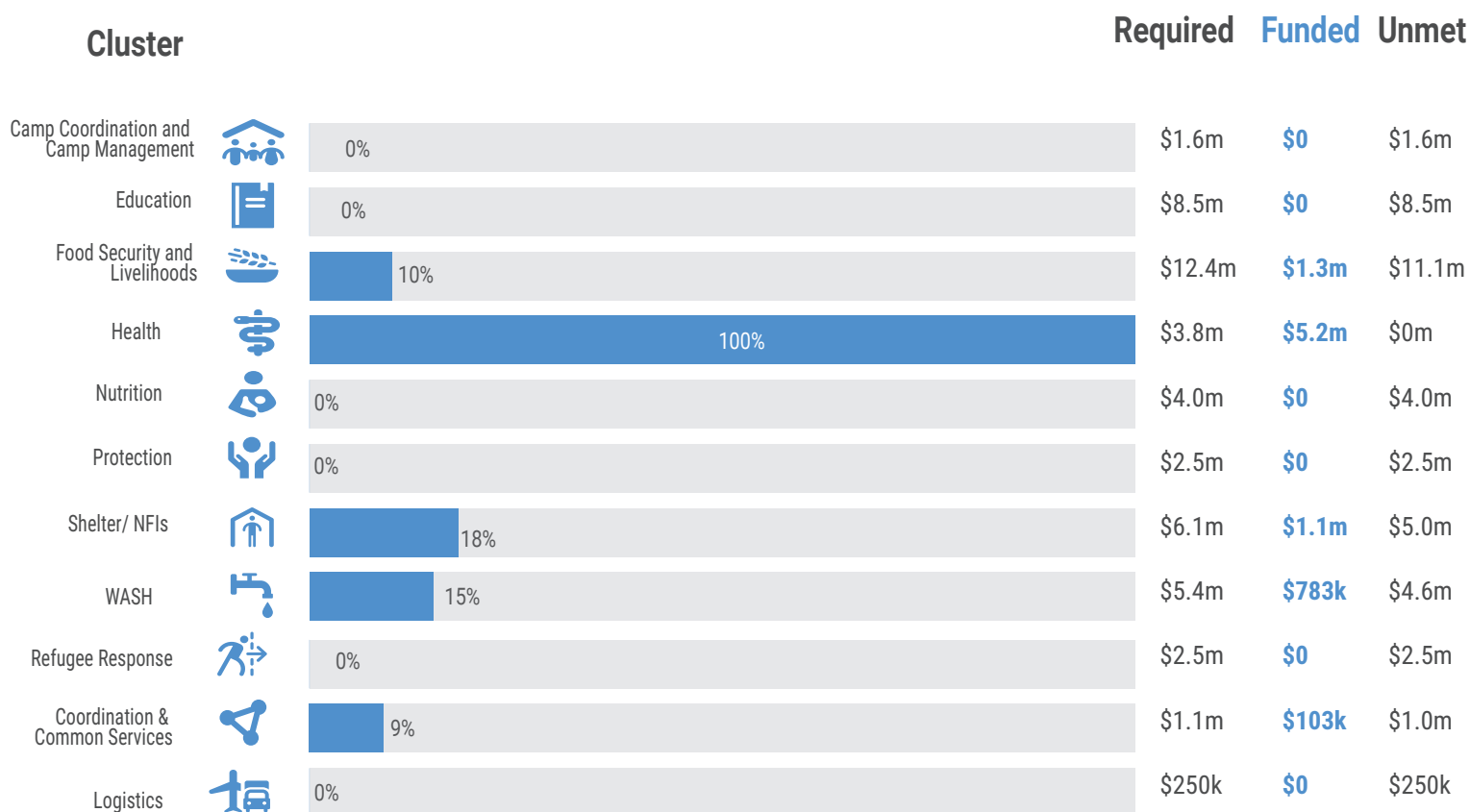
Total funds mobilized

19%

Total funded

\$38.87_M

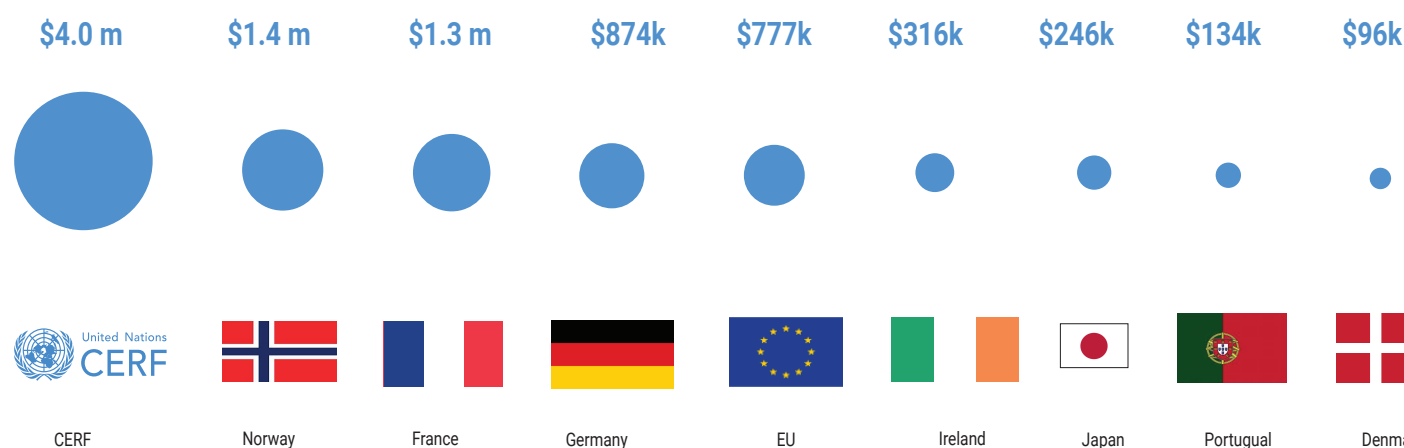
Unmet funding



* Multi-sectorial funding: \$562k

* Not specified funding: \$237k

TOP 9 DONORS



5. As recorded on OCHA Financial Tracking Service (<https://fts.unocha.org/countries/152/summary/2022>).