

### SITUATION UPDATE

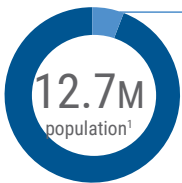
In 2022, Mozambique was affected by three natural disasters during the cyclonic season (October 2021 to April 2022). Tropical Cyclone Gombe hit the country on 11 March as a Category 3 cyclone in the wake of two extreme weather events—Tropical Storm Ana and Tropical Depression Dumako—that had struck six weeks earlier, affecting 200,000 people.

Tropical Cyclone Gombe left a trail of severe damage and devastation on its path. The cyclone affected 736,000 people and displaced some 23,000 people, causing extensive damage to infrastructures. While the Government's preparedness and response efforts along with the response by humanitarian partners

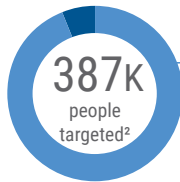
played a critical role in preventing further loss of lives and quickly responding to the unfolding needs of the displaced people who had lost everything, the rising humanitarian needs outstripped the capacity of humanitarian organizations to respond to the needs brought by the disaster.

The Gombe Emergency Response Plan (ERP) seeks US\$ 48.07M to deliver life-saving, life-sustaining assistance and protection to 387,000 people in Nampula, Sofala and Zambezia provinces from April to September 2022. At the end of July the ERP is 18 per cent funded having received US\$ 8.8 million from seven donors.

### KEY FIGURES



**697k**  
people in need  
**6%**  
of population



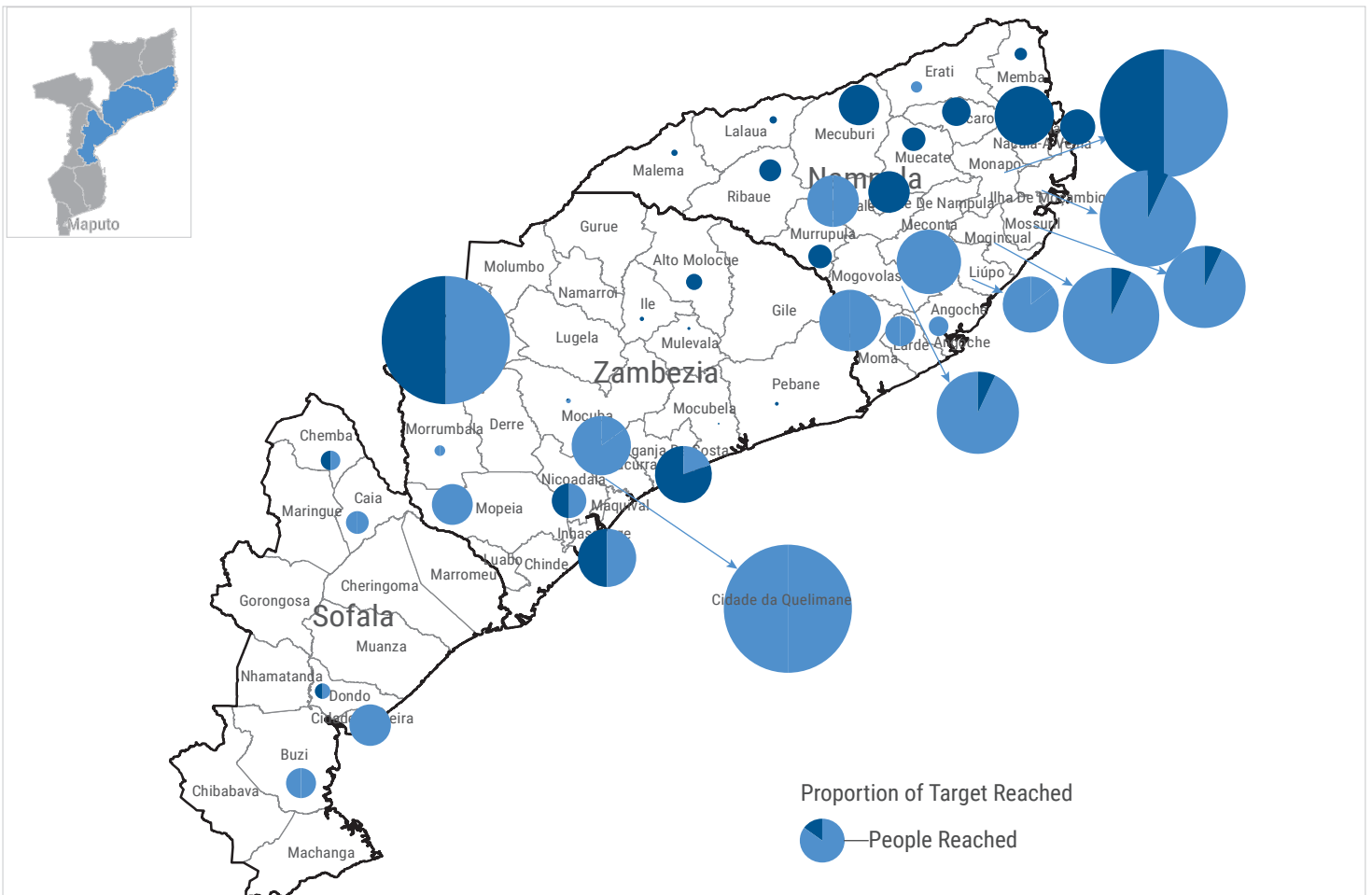
**366k**  
people reached<sup>3</sup>  
**94%**  
of target



- 1 INGOs (6%)
- 10 NNGOs (55%)
- 7 UN (39%)

Number of organizations who have been responding up to July 2022

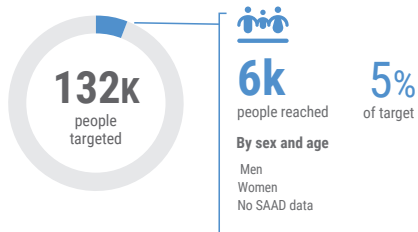
### PEOPLE TARGETED AND REACHED BY DISTRICT BETWEEN MARCH 2022 AND JULY 2022



### RESPONSE OVERVIEW<sup>4</sup>

#### CCCM

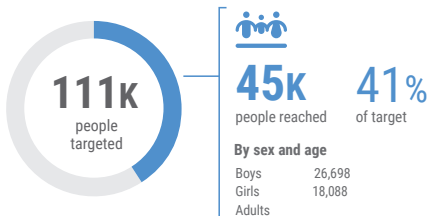
**283k** people in need



2,759 People with access to CCCM services.

#### EDUCATION

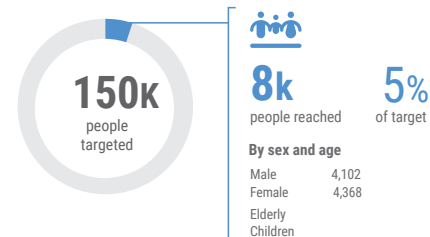
**163k** people in need



43,326 Children reached through setting of temporary learning space and distribution of learner kits

#### SHELTER /NFI

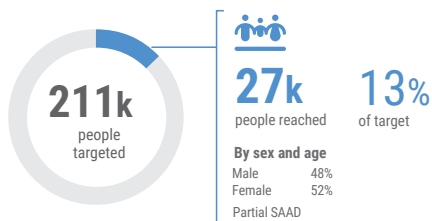
**624k** people in need



8,470 People assisted with basic emergency shelter and NFIs kit

#### FOOD SECURITY & LIVELIHOODS

**697k** people in need

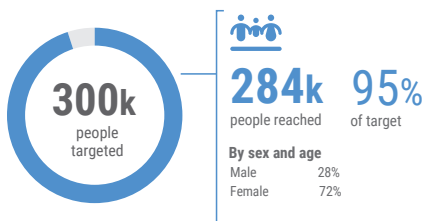


217,813 People reached with food

200,540 People reached with livelihood assistance

#### HEALTH

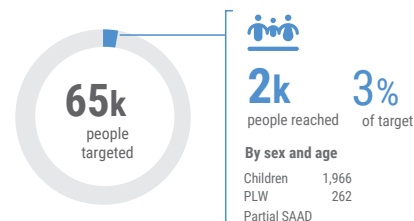
**346k** people in need



280,568 People reached with emergency medical kits distributed in crisis-affected locations.

#### NUTRITION

**130k** people in need

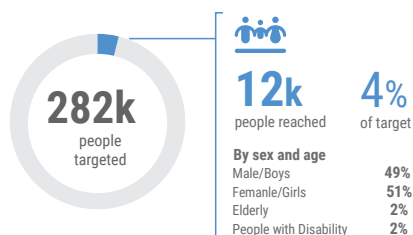


1,966 Children under 5 admitted for treatment (SAM and MAM) in the management of acute malnutrition programme (PRN)

262 Pregnant and Lactating Women (PLWs) admitted for treatment (SAM and MAM) in the management of acute malnutrition programme

#### PROTECTION

**376k** people in need



1,682 IDPs accessed services on civil documentation

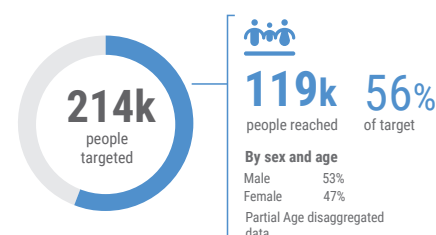
386 Women and girls provided with psychosocial support at women and girls safe spaces

112 GBV survivors provided assistance and support (eg. health care, MHPSS)

- GENERAL PROTECTION**  
11,742 People reached with protection services
- CHILD PROTECTION**  
0
- GENDER-BASED VIOLENCE**  
0
- PSEA**  
0

#### WASH

**268k** people in need



44,250 People with access to safe drinking water

20,760 People with critical WASH supplies

23,490 People reached with safe and appropriate sanitation facilities

### 2022 GOMBE ERP FUNDING (as of 31 July)<sup>5</sup>

**\$48.07<sub>M</sub>**

Gombe ERP requirements

**\$8.8<sub>M</sub>**

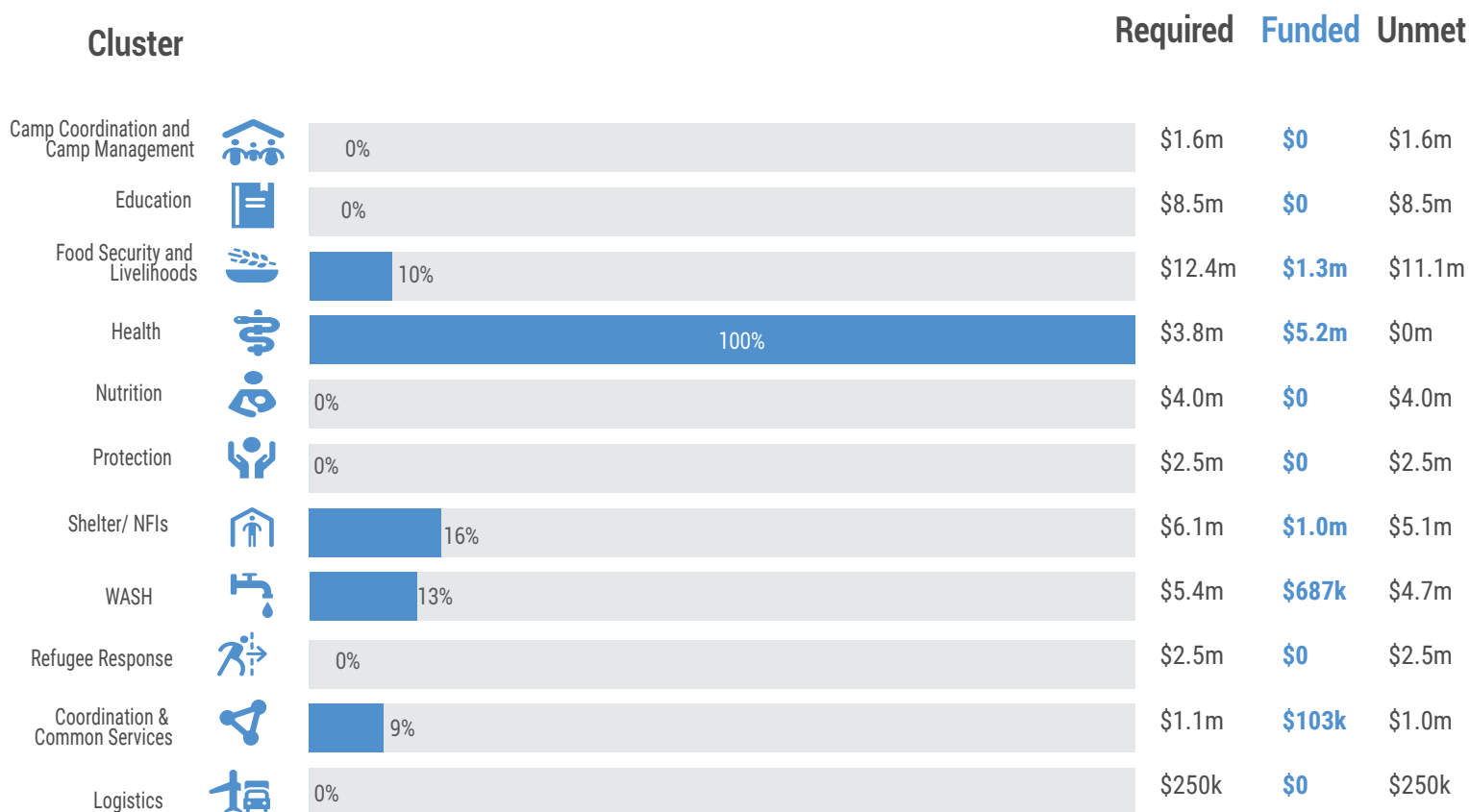
Total Funds Mobilized

**18%**

Total Funded

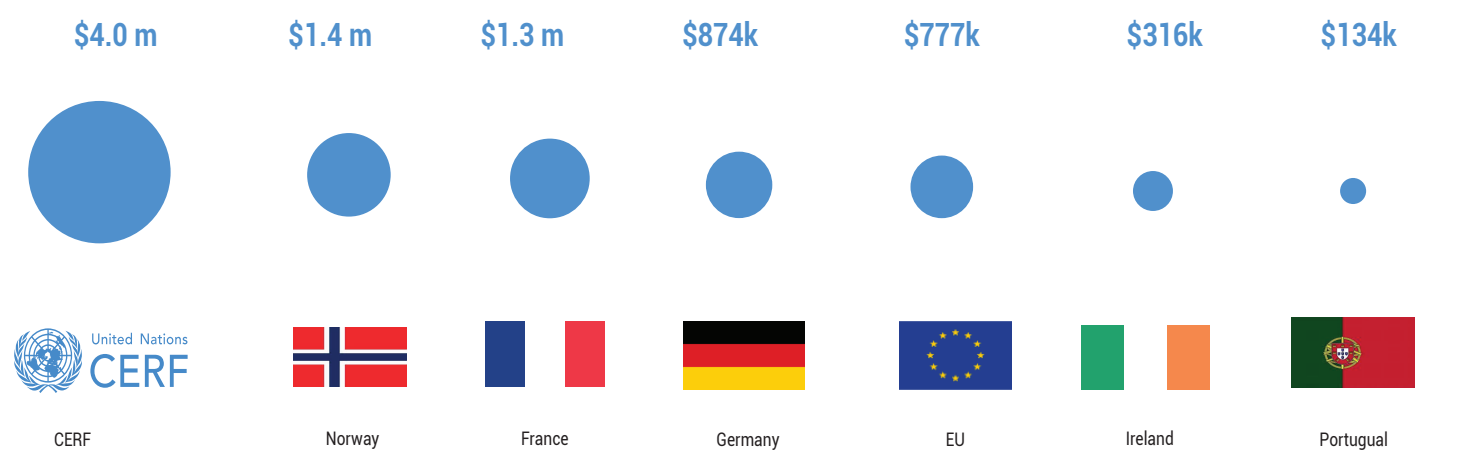
**\$39.27<sub>M</sub>**

Unmet Funding



\* Not specified funding: \$553k

### TOP DONORS



5. As recorded on OCHA Financial Tracking Service (<https://fts.unocha.org/countries/152/summary/2022>).