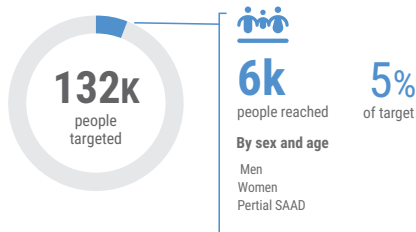


RESPONSE OVERVIEW4

CCCM

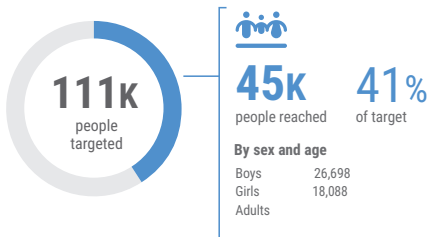
283k people in need



2,759 People with access to CCCM services.

EDUCATION

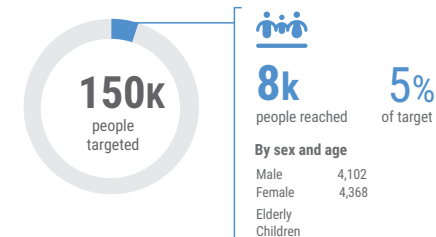
163k people in need



43,326 Children reached through setting of temporary learning space and distribution of learner kits

SHELTER /NFIs

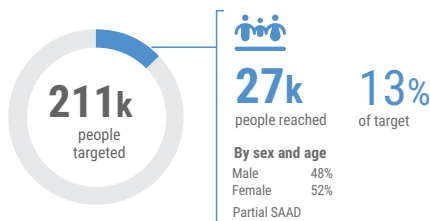
624k people in need



8,470 People assisted with basic emergency shelter and NFIs kit

FOOD SECURITY & LIVELIHOODS

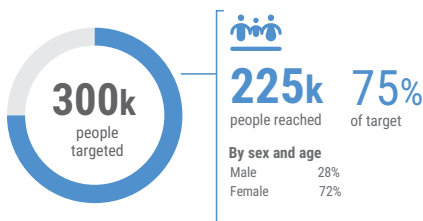
697k people in need



217,813 People reached with food distribution
200,540 People reached with livelihood assistance

HEALTH

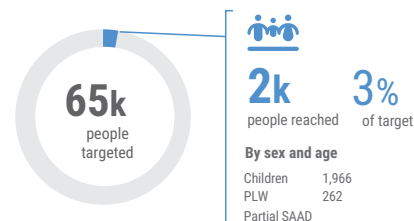
346k people in need



217,952 People reached with emergency medical kits distributed in crises affected locations.
37,272 people were Detected, notified and responded to outbreaks (cholera, acute water diarrhea, measles)

NUTRITION

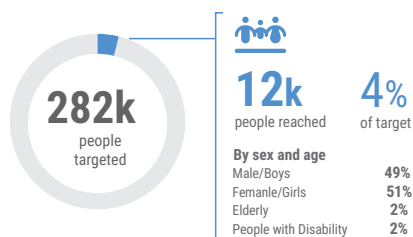
130k people in need



1,966 Children under 5 children admitted for treatment (SAM and MAM) in the management of acute malnutrition programme (PRN)
262 Pregnant and Lactating Women (PLWs) admitted for treatment (SAM and MAM) in the management of acute malnutrition programme

PROTECTION

376k people in need

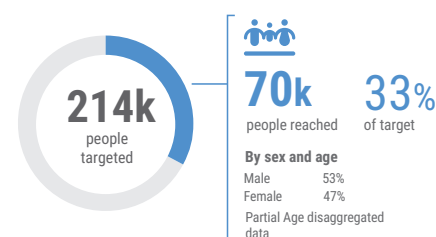


1,682 IDPs accessed services on civil documentation
386 Women and girls provided with psychosocial support at women and girls safe spaces
112 GBV survivors provided assistance and support (eg. Health care, MHPSS)

- GENERAL PROTECTION**
11,742 People reached with protection services
- CHILD PROTECTION**
0 Children reached
- GENDER-BASED VIOLENCE**
0 People reached
- PSEA**
0 People reached PSEA services

WASH

268k people in need



14,700 People with access to safe drinking water
18,120 People with critical WASH supplies
23,490 People reached with safe and appropriate sanitation facilities

2022 GOMBE ERP FUNDING (as of 30 June)⁵

\$48.07_M

Gombe ERP requirements

\$4.3_M

Total Funds Mobilized

9%

Total funded

\$43.8_M

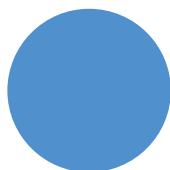
Unmet Funding

Cluster	Required	Funded	Unmet
Camp Coordination and Camp Management	\$1.6m	\$0	\$1.6m
Education	\$8.5m	\$0	\$8.5m
Food Security and Livelihoods	\$12.4m	\$1.3m	\$11.1m
Health	\$3.8m	\$1.0m	\$2.8m
Nutrition	\$4.0m	\$0	\$4.0m
Protection	\$2.5m	\$0	\$2.5m
Shelter/ NFIs	\$6.1m	\$1.0m	\$5.1m
WASH	\$5.4m	\$687k	\$4.7m
Refugee Response	\$2.5m	\$0	\$2.5m
Coordination & Common Services	\$1.1m	\$103k	\$1.0m
Logistics	\$250k	\$0	\$250k

* Not specified funding: \$135k

TOP DONORS

\$4.0 m



CERF

\$134k



Portugal

\$103k



Norway

5. As recorded on OCHA Financial Tracking Service (<https://fts.unocha.org/countries/152/summary/2022>).