

SITUATION UPDATE

The humanitarian dashboard presents the funding requirements stemming from the 2022 Humanitarian Response Plan (HRP) to respond to the crisis in northern Mozambique as well as the Emergency Response Plan (ERP) to respond to humanitarian needs following the impact of Cyclone Gombe.

At least 1.5 million people in northern Mozambique will need life-saving and life-sustaining humanitarian assistance and protection in 2022 as a result of the continued impact of armed conflict, violence and insecurity in Cabo Delgado Province.

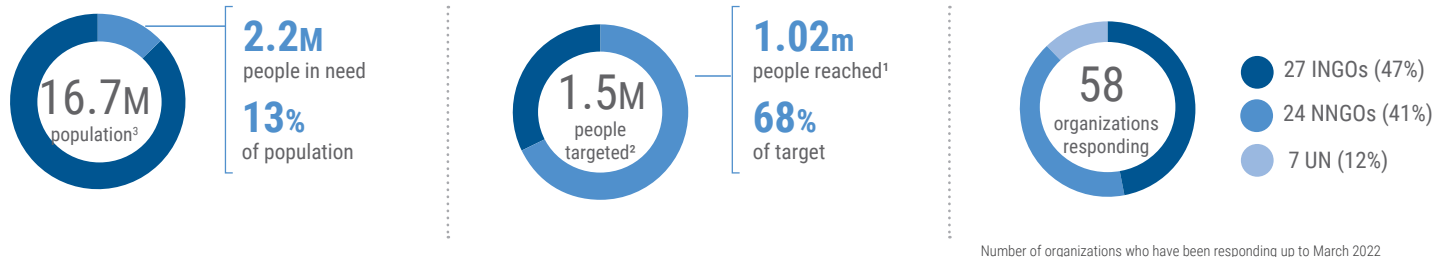
The armed conflict has heightened food insecurity and malnutrition, with families forced to abandon their homes and fields; erratic rainfall in some parts of the region has compounded crop losses. Humanitarian needs are concentrated in the districts hardest hit by the conflict – Macomia, Mocimboa da Praia, Palma and Quissanga – as well as those that host the highest number of displaced people, namely Nangade, Metuge, Montepuez, Mueda and Pemba. In 2022, the humanitarian response in northern Mozambique will target 1.2 million people in the most urgent need of assistance and protection in Cabo Delgado, Nampula and Niassa. The 2022 Humanitarian Response Plan (HRP) seeks US\$ 388.5M to deliver life-saving, and life-sustaining assistance and protection to 1.1 M people in the northern provinces of

Cabo Delgado, Niassa and Nampula provinces.

Apart from conflict in the northern region, communities in Mozambique have also been suffering from the impact of a number of natural disaster recorded in early 2022, including tropical storms and tropical cyclones. Tropical Cyclone Gombe was the 3rd cyclone in Mozambique in the space of three months. It hit the country on 11 March as Category 3 cyclone in the wake of two extreme weather events (Tropical Storm Ana and Tropical Depression Dumako) which had already struck six weeks prior affecting 200,000 people.

Tropical Cyclone Gombe left a trail of damage and devastation on its path. The cyclone affected 736,000 people and displaced some 23,000 people causing extensive damage to infrastructure. While the Government's preparedness and response efforts played a critical role in preventing further loss of lives and quickly responding to the unfolding needs of the displaced people who had lost everything, the rising humanitarian needs outstripped the capacity of humanitarian organisations to respond. The Gombe Emergency Response Plan (ERP) seeks US\$ 48.07M to deliver life-saving, and life-sustaining assistance and protection to 387K people in Nampula, Zambezia, and Sofala provinces in the next six months.

KEY FIGURES



2022 HRP & ERP FUNDING (10 May 2022)⁴



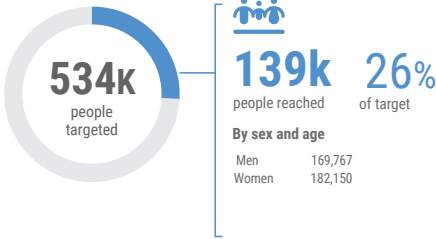
Cluster	numbers in US\$ millions	Required	Funded	Unmet
Camp Coordination and Camp Management		\$12.4m	\$0	\$12.4m
Education		\$32m	\$0	\$32m
Food Security and Livelihoods		\$197.2m	\$10.4m	\$186.8m
Health		\$16.4m	\$1.0m	\$15.4m
Nutrition		\$23.4m	\$0	\$23.4m
Protection		\$44m	\$0.9m	\$42.2m
Shelter/ NFI		\$48.5m	\$1.4m	\$47.4m
WASH		\$33.9m	\$1.1m	\$32.8m
Refugee Response		\$15.3m	\$0	\$15.3m
Coordination & Common Services		\$7.2m	\$1.2m	\$6.0m
Logistics		\$6.25m	\$2.3k	\$3.9m

* Not specified funding: \$18.6m

RESPONSE OVERVIEW⁶

CCCM

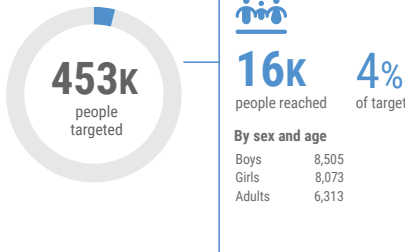
905k people in need



- 138,512 People with access to CCCM services.
- 87,087 People with access to site coordination structures.
- 64,207 People with access to Complaints and feedback mechanisms (including information desks).

EDUCATION

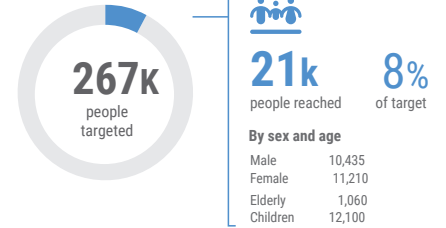
549k people in need



- 16,578 Children Reached through Accelerated Learning.
- 286 Adults Training in TICCS/ Accelerated Learning.

SHELTER /NFIs

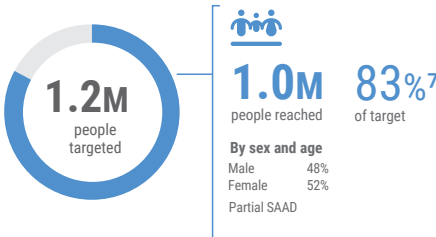
1.6M people in need



- 7,945 People assisted with basic Emergency Shelter and NFIs kit
- 9,180 People assisted with NFIs only

FOOD SECURITY & LIVELIHOODS

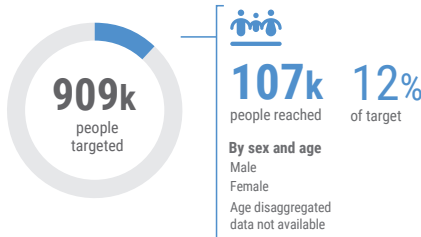
1.8M people in need



- 962,857 People reached with food distribution
- 142,593 People reached with livelihood assistance

HEALTH

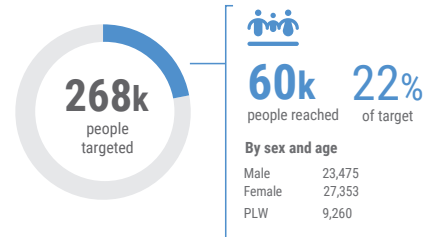
1.6M people in need



- 21,516 Women of Child Bearing Age(WCBA) received modern contraceptives
- 18,103 Deliveries assisted by skilled health workers
- 2,501 PLHIV >15 yrs not on ART
- 588 Survivors of SGBV receiving clinical care for rape
- 222 Children 6months to 15yrs received measles vaccination
- 171 People trained and deployed in Rapid Response team (RRT)

NUTRITION

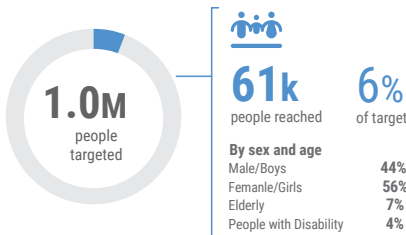
457k people in need



- 50,828 Children under 5 children admitted for treatment (SAM and MAM) in the management of acute malnutrition programme (PRN)
- 45,694 Children under 5 screening for acute malnutrition
- 9,260 Pregnant and Lactating Women (PLWs) admitted for treatment (SAM and MAM) in the management of acute malnutrition programme (PRN)
- 580 Pregnant and Lactating women screening of acute malnutrition

PROTECTION

1.9M people in need



- 141 IDPs accessed services on civil documentation
- 668 Girls and boys participating in sustained and structured psychosocial support and child protection programmes
- 386 women and girls provided with psychosocial support at women and girls safe spaces
- 75 GBV survivors provided assistance and support (eg. Health care, MHPSS)

GENERAL PROTECTION

13,060 People reached with protection services

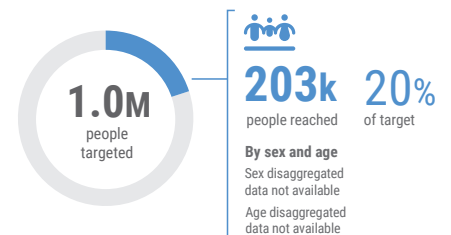
CHILD PROTECTION
24,480 Children reached

GENDER-BASED VIOLENCE
10,446 People reached

PSEA
751 People reached PSEA services

WASH

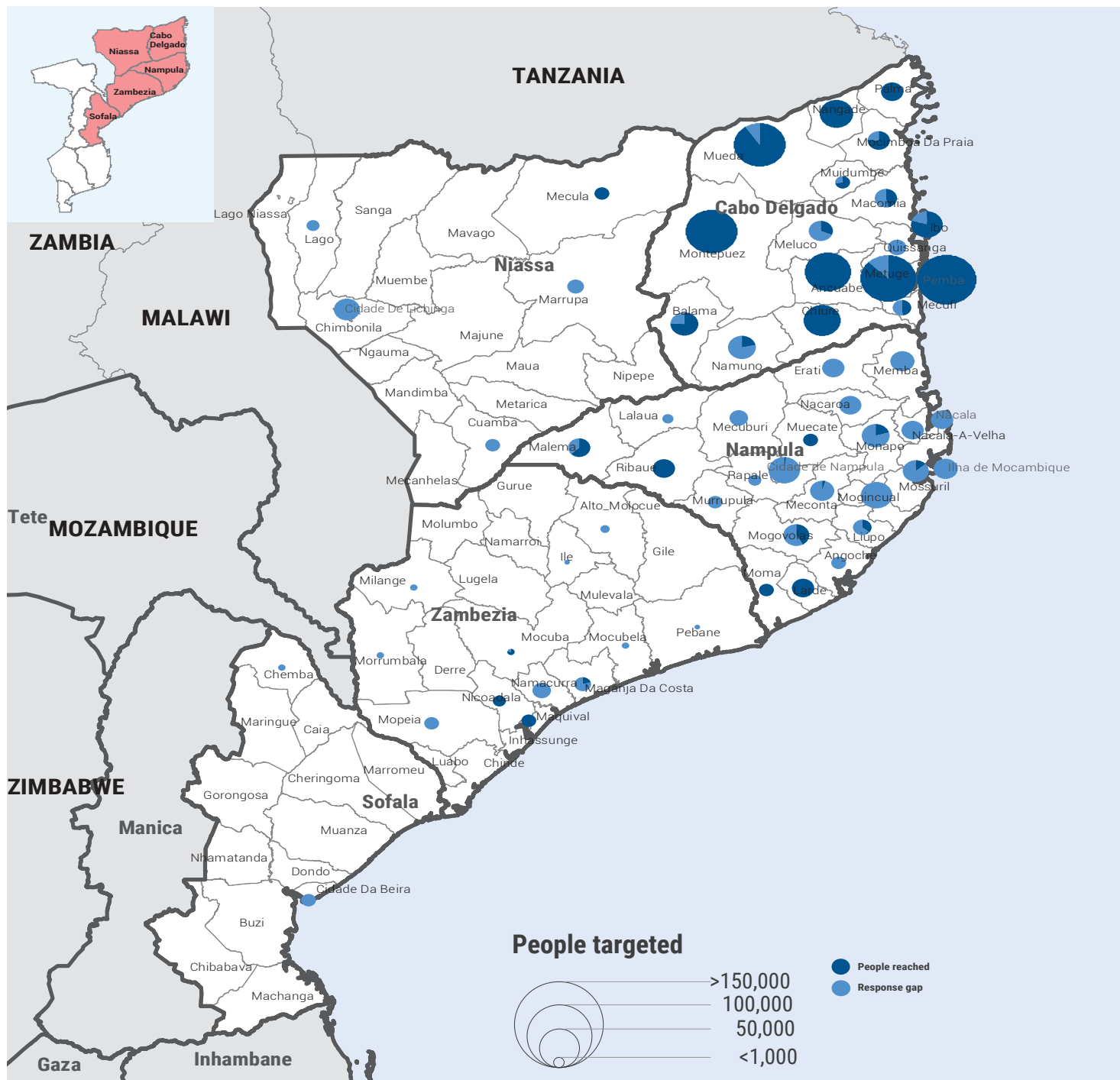
1.3M people in need



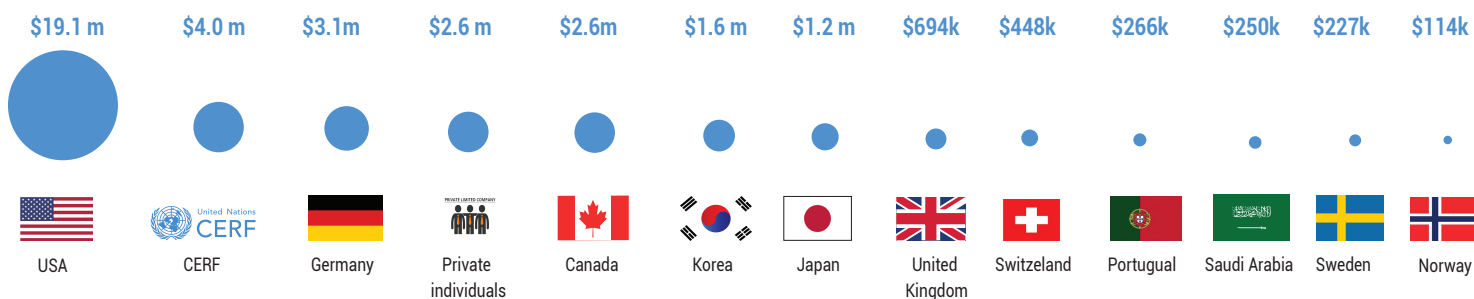
- 128,475 People with access to safe drinking water
- 83,530 People with access to sanitation facilities
- 198,275 People reached with sanitation and hygiene messages

| 6. Response overview figures for both HRP & Gombe ERP analysed through cluster 5Ws submissions with core cluster specific monitoring indicators highlighted. | 7. Food security targets 940 people every month to receive food assistance.

PEOPLE TARGETED AND REACHED BY DISTRICT BETWEEN JANUARY 2022 AND MARCH 2022



TOP 13 DONORS *numbers in US\$ millions*



As recorded on OCHA Financial Tracking Service (<https://fts.unocha.org/countries/152/summary/2022>).

The boundaries and names shown and the designations used on this map do not imply official endorsement or acceptance by the United Nations