

SITUATION UPDATE

At least 1.5 million people in northern Mozambique need life-saving and life-sustaining humanitarian assistance and protection in 2022 as a result of the continued impact of armed conflict, violence and insecurity in Cabo Delgado Province. The armed conflict has heightened food insecurity and malnutrition, with families forced to abandon their homes and fields; erratic rainfall in some parts of the region has compounded crop losses.

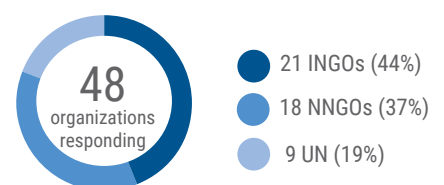
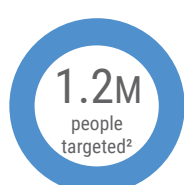
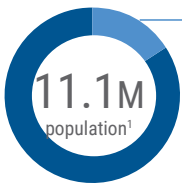
Humanitarian needs are concentrated in the districts hardest hit by the conflict – Macomia, Mocimboa da Praia, Palma and Quissanga – as well as those that host the highest number of displaced people, Chiure, Metuge, Montepuez, Mueda, Nangade and Pemba.

In 2022, the humanitarian response in northern Mozambique targets 1.2 million people in Cabo Delgado, Nampula and Niassa provinces. The 2022 Humanitarian Response Plan (HRP) seeks US\$388.5M to

deliver life-saving, life-sustaining assistance and protection to 1.2 million people across the three provinces. At the end of October, the HRP is 57 per cent funded having received \$222.million.

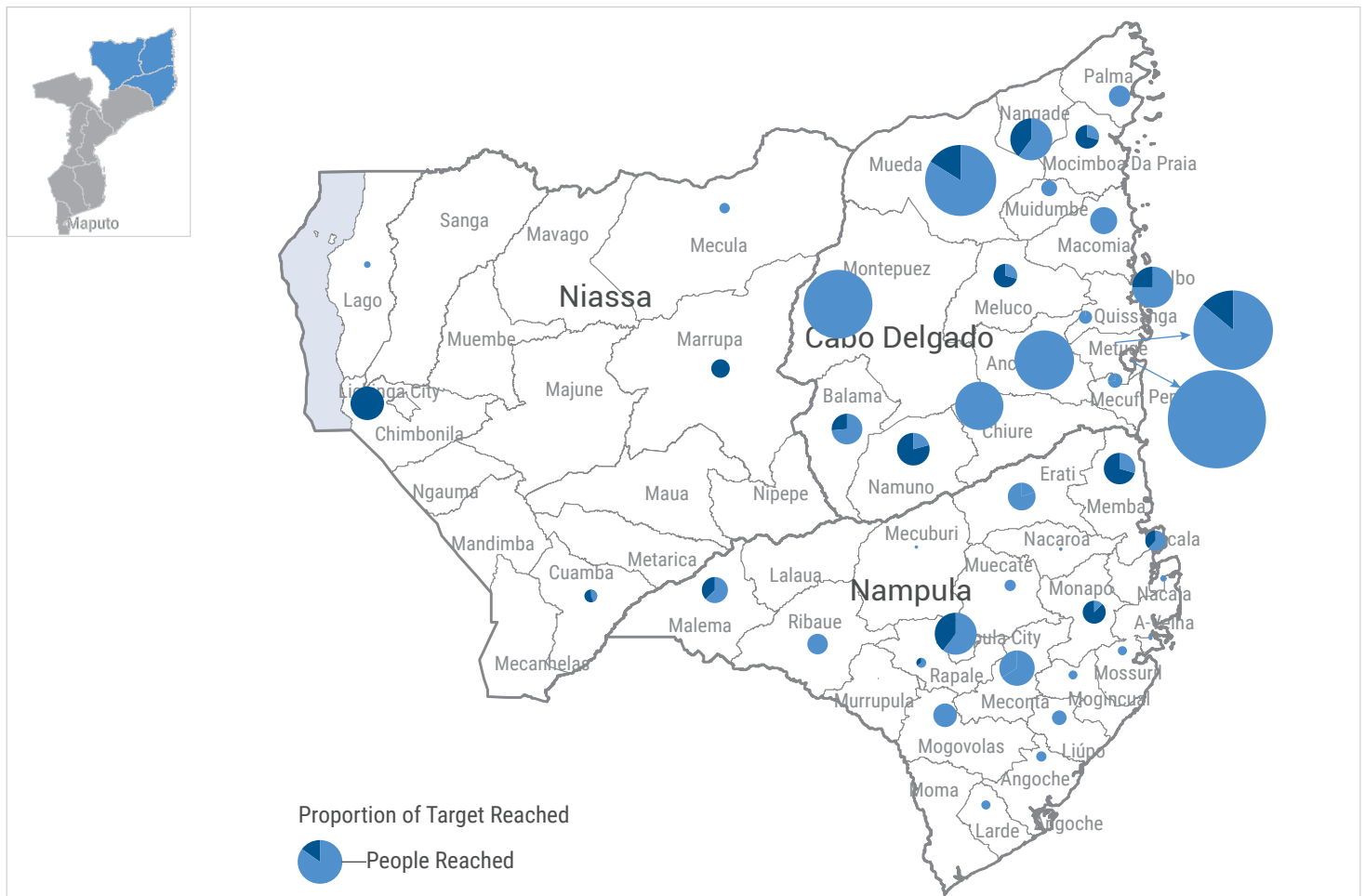
Funding imbalances among clusters persist with two clusters - Health and Food Security and Livelihoods having received just above 50 per cent of their requirements while the Camp Coordination and Camp Management and Education, Nutrition, Protection and Water Sanitation and Hygiene clusters remained underfunded. Achievements against set targets by the clusters range between 30 per cent (Shelter and NFIs) to 117 per cent (Food Security and Livelihoods). Due to increasing needs and limited funding, since April, the Food Security and Livelihoods cluster halved the food basket to 40 per cent of the recommended minimum daily caloric needs.

KEY FIGURES



Number of organizations who have been responding up to October 2022

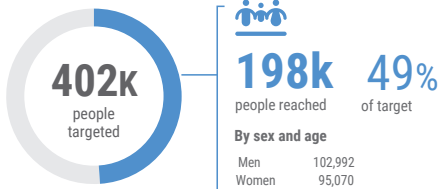
PEOPLE TARGETED AND REACHED BY DISTRICT BETWEEN JANUARY AND OCTOBER 2022⁴



RESPONSE OVERVIEW⁵

CCCM

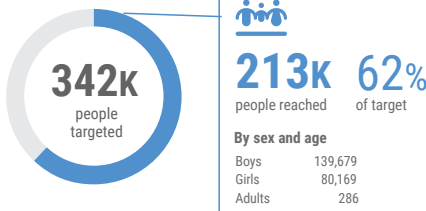
622k people in need



- 182,051 People with access to CCCM services
- 142,993 People with access to site coordination structures
- 115,443 People with access to complaints and feedback mechanisms (including information desks)

EDUCATION

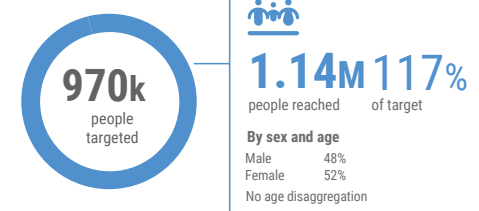
386k people in need



- 213,034 Children reached through accelerated learning
- 286 Teachers trained

FOOD SECURITY & LIVELIHOODS

1.1M people in need

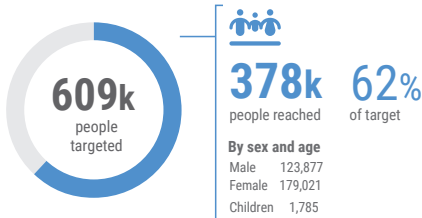


- 1,138,688 People reached with food*
- 220,965 People reached with livelihood assistance

NOTE:*
Due to increasing needs and limited funding, since April, the Food Security and Livelihoods cluster halved the food basket to 40 per cent of the recommended minimum daily caloric needs

HEALTH

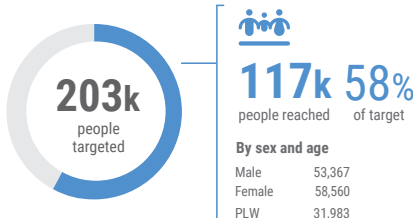
1.3M people in need



- 50,155 Women of Child Bearing Age (WCBA) receiving modern contraceptives
- 34,536 Deliveries assisted by skilled health workers
- 1,020 Survivors of GBV received clinical care for rape
- 1,785 Children six months to 15 years vaccinated against measles
- 248 People trained and deployed in Rapid Response Team
- 174,598 Outpatient consultations
- 105,998 People received assorted emergency medical kits.

NUTRITION

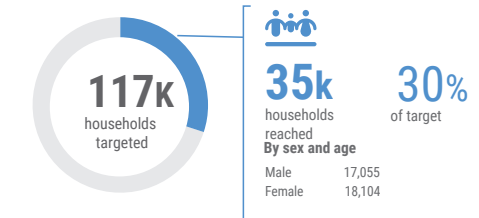
327k people in need



- 96,768 Children under 5 admitted for treatment (SAM and MAM) in the management of acute malnutrition programme
- 22,500 Children under 5 screened for acute malnutrition
- 13,144 Pregnant and Lactating Women (PLW) admitted for treatment (SAM and MAM) in the management of acute malnutrition programme
- 8,665 Pregnant and lactating women screening of acute malnutrition

SHELTER /NFIs

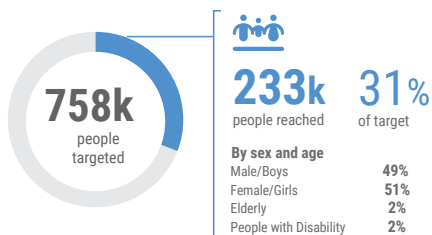
982k people in need



- 26,230 Households assisted with basic emergency shelter and NFIs kits
- 9,180 Households assisted with NFIs

PROTECTION

1.5M people in need



- 1,685 IDPs accessed services of civil documentation
- 668 Girls and boys participating in sustained and structured psychosocial support and child protection programmes
- 386 Women and girls provided with psychosocial support at women and girls safe spaces
- 217 GBV survivors provided with assistance and support (eg. health care, MHPSS)

GENERAL PROTECTION

118k People reached with protection services

CHILD PROTECTION

155k Children reached

GENDER-BASED VIOLENCE

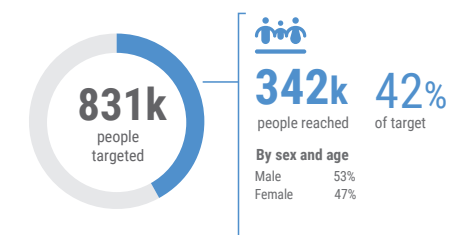
78k People reached

PSEA

9k People reached by PSEA services

WASH

992K people in need



- 221,065 People with access to safe drinking water
- 179,355 People with access to sanitation facilities
- 217,235 People reached with critical WASH supplies
- 341,535 People reached with sanitation and hygiene messages

5. Response overview figures for HRP analysed through cluster 5Ws submissions with core cluster specific monitoring indicators highlighted. | 6. Food security targets about 970k people every month to receive food assistance.

2022 HRP FUNDING (as of 31 October)⁷

\$388.5M

HRP requirements

\$222.8M

Total Funds Mobilized

57%

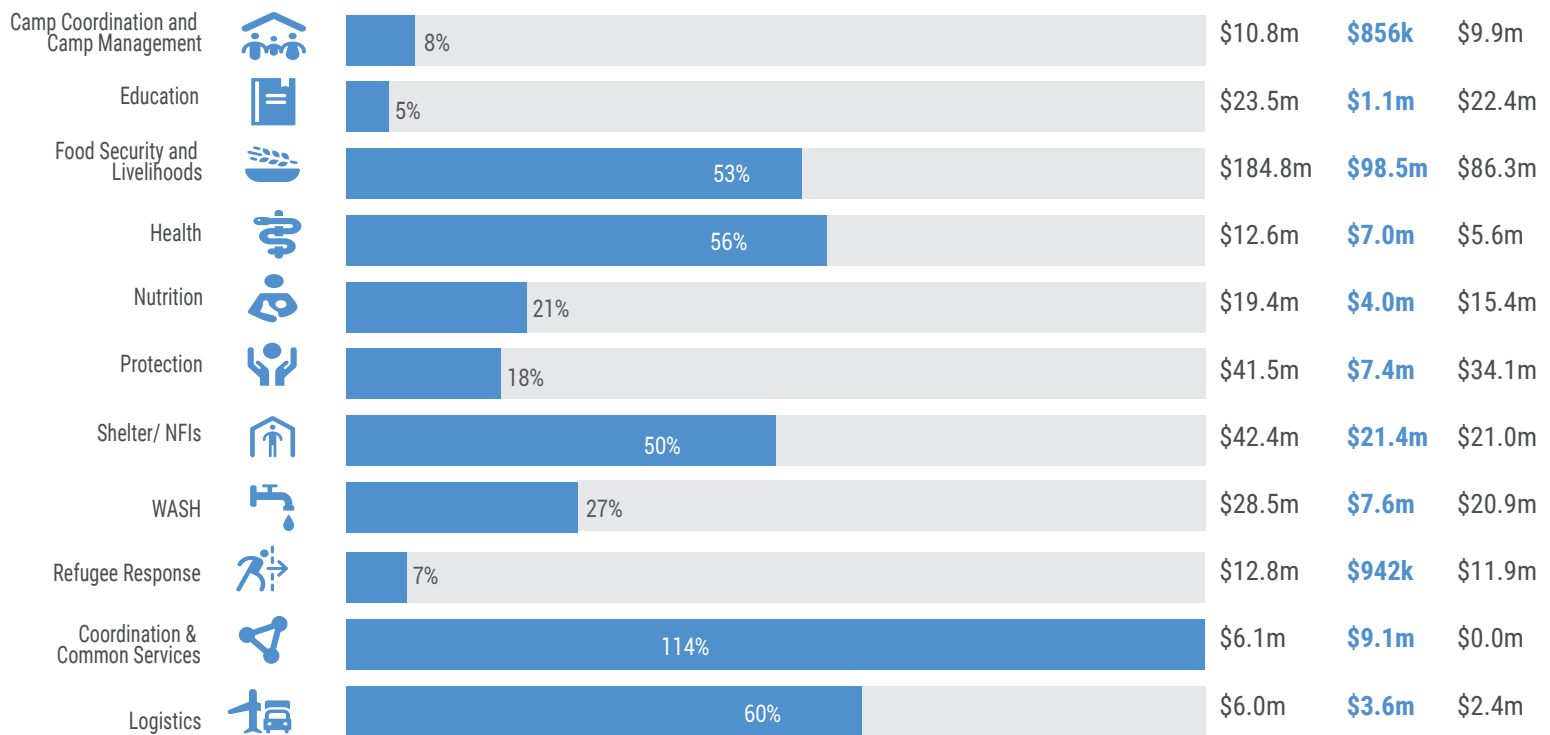
Total Funded

\$165.7M

Unmet Funding

Cluster

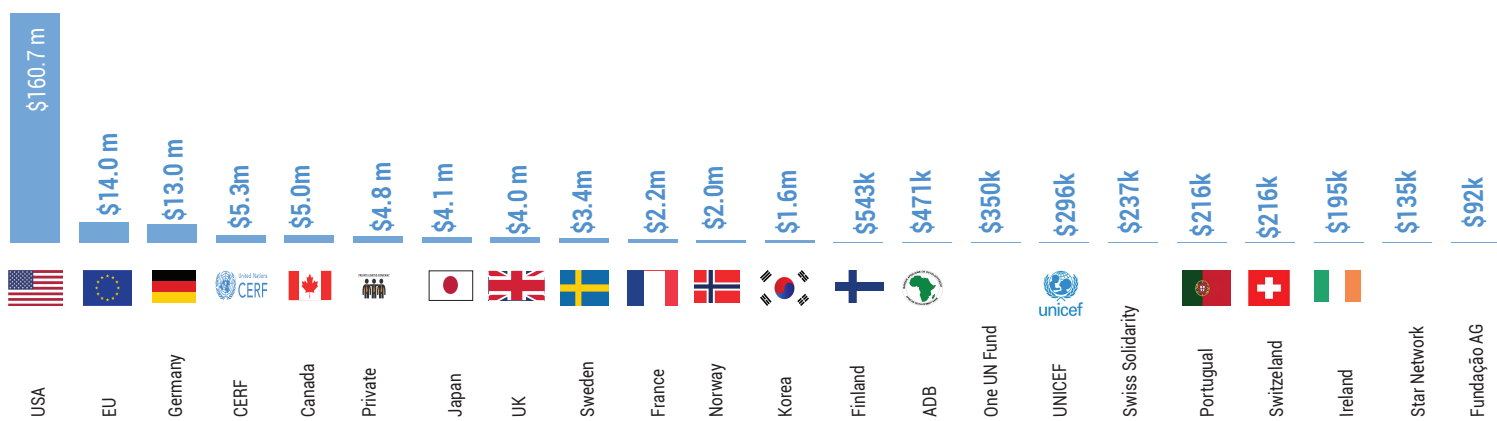
Required **Funded** Unmet



* Multi-sectorial funding: \$45.4m

* Not specified funding: \$16.0m

DONORS



7. As recorded on OCHA Financial Tracking Service (<https://fts.unocha.org/countries/152/summary/2022>). CCCM and Education clusters actual funding levels are higher than its reflected on the FTS.