

SITUATION UPDATE

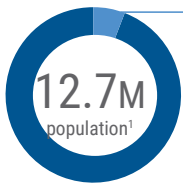
In 2022, Mozambique was affected by three natural disasters during the cyclonic season (October 2021 to April 2022). Tropical Cyclone Gombe hit the country on 11 March as a Category 3 cyclone in the wake of two extreme weather events - Tropical Storm Ana and Tropical Depression Dumako - which had struck six weeks earlier, affecting 200,000 people.

Tropical Cyclone Gombe left a trail of severe damage and devastation on its path. The cyclone affected 736,000 people and displaced some 23,000 people, causing extensive damage to infrastructures. While the Government's preparedness and response efforts along with the response by humanitarian partners

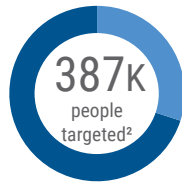
played a critical role in preventing further loss of lives and quickly responding to the unfolding needs of the displaced people who had lost everything, the rising humanitarian needs outstripped the capacity of humanitarian organizations to respond to the needs brought by the disaster.

The Gombe Emergency Response Plan (ERP) seeks U\$48.07M to deliver life-saving, life-sustaining assistance and protection to 387,000 people in Nampula, Sofala and Zambezia provinces from April to September 2022. At the end of May the ERP is 9 per cent funded having received \$4.3 million from three donors.

KEY FIGURES



697k
people in need
6%
of population



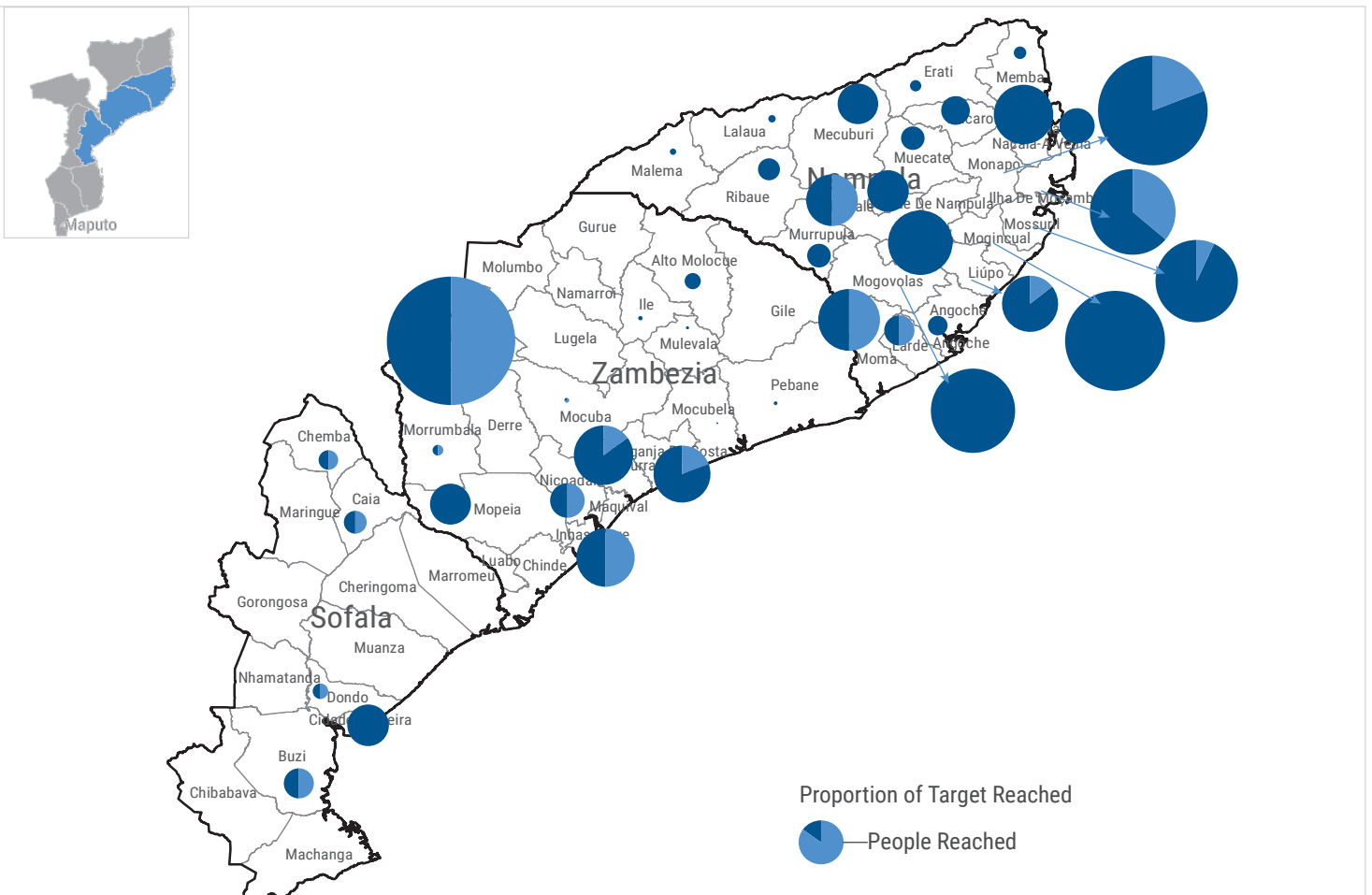
117k
people reached³
30%
of target



- 1 INGOs (6%)
- 10 NNGOs (55%)
- 7 UN (39%)

Number of organizations who have been responding up to May 2022

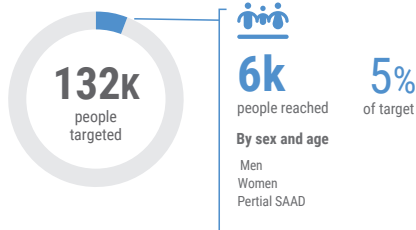
PEOPLE TARGETED AND REACHED BY DISTRICT BETWEEN MARCH 2022 AND MAY 2022



RESPONSE OVERVIEW⁴

CCCM

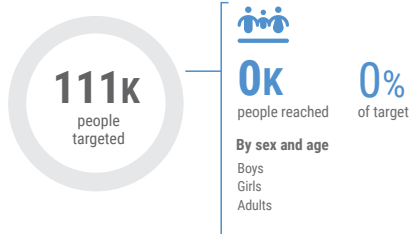
283k people in need



2,759 People with access to CCCM services.

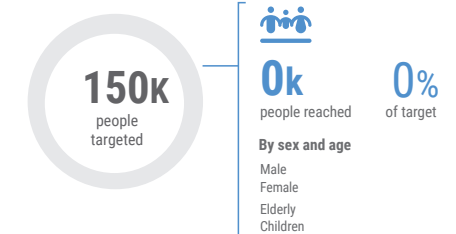
EDUCATION

163k people in need



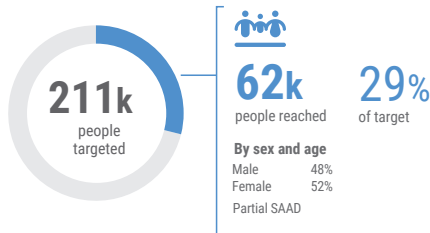
SHELTER /NFIs

624k people in need



FOOD SECURITY & LIVELIHOODS

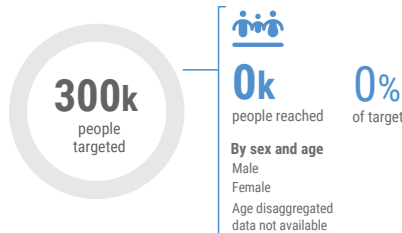
697k people in need



61,632 People reached with food distribution

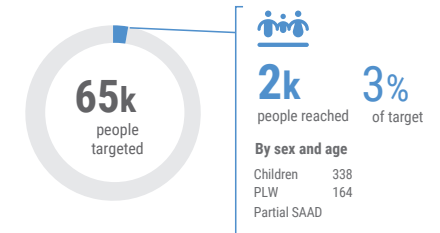
HEALTH

346k people in need



NUTRITION

130k people in need

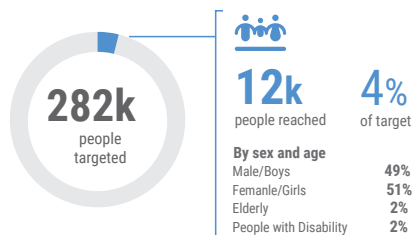


186 Children under 5 children admitted for treatment (SAM and MAM) in the management of acute malnutrition programme (PRN)

164 Pregnant and Lactating Women (PLWs) admitted for treatment (SAM and MAM) in the management of acute malnutrition programme (PRN)

PROTECTION

376k people in need



1,682 IDPs accessed services on civil documentation

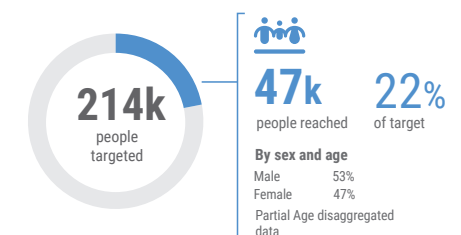
386 Women and girls provided with psychosocial support at women and girls safe spaces

112 GBV survivors provided assistance and support (eg. Health care, MHPSS)

- GENERAL PROTECTION**
11,742 People reached with protection services
- CHILD PROTECTION**
0 Children reached
- GENDER-BASED VIOLENCE**
0 People reached
- PSEA**
0 People reached PSEA services

WASH

268k people in need



14,700 People with access to safe drinking water
8,620 People with critical WASH supplies

2022 GOMBE ERP FUNDING (as of 31 May)⁵

\$48.07_M

Gombe ERP requirements

\$4.3_M

Total Funds Mobilized

9%

Total funded

\$43.8_M

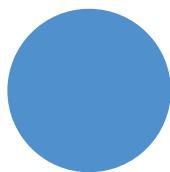
Unmet Funding

Cluster	Required	Funded	Unmet
Camp Coordination and Camp Management	\$1.6m	\$0	\$1.6m
Education	\$8.5m	\$0	\$8.5m
Food Security and Livelihoods	\$12.4m	\$1.3m	\$11.1m
Health	\$3.8m	\$1.0m	\$2.8m
Nutrition	\$4.0m	\$0	\$4.0m
Protection	\$2.5m	\$0	\$2.5m
Shelter/ NFIs	\$6.1m	\$1.0m	\$5.1m
WASH	\$5.4m	\$687k	\$4.7m
Refugee Response	\$2.5m	\$0	\$2.5m
Coordination & Common Services	\$1.1m	\$103k	\$1.0m
Logistics	\$250k	\$0	\$250k

* Not specified funding: \$135k

TOP DONORS

\$4.0 m



CERF

\$134k



Portugal

\$103k



Norway

5. As recorded on OCHA Financial Tracking Service (<https://fts.unocha.org/countries/152/summary/2022>).