

### SITUATION UPDATE

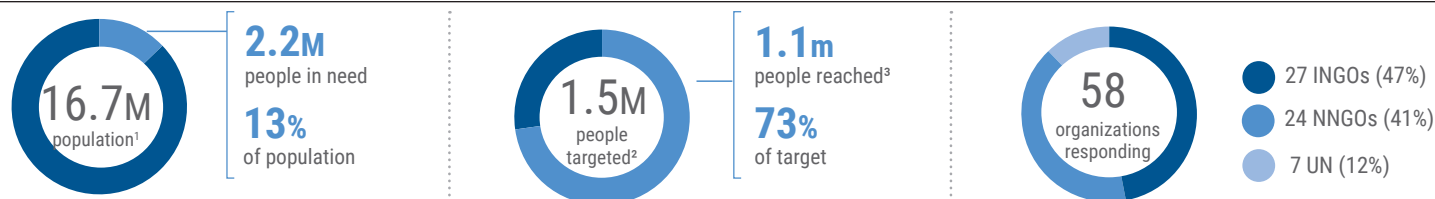
At least 1.5 million people in northern Mozambique will need life-saving and life-sustaining humanitarian assistance and protection in 2022 as a result of the continued impact of armed conflict, violence and insecurity in Cabo Delgado Province.

The armed conflict has heightened food insecurity and malnutrition, with families forced to abandon their homes and fields; erratic rainfall in some parts of the region has compounded crop losses. Humanitarian needs are concentrated in the districts hardest hit by the conflict – Macomia, Mocimboa da Praia, Palma and Quissanga – as well as those that host the highest number of displaced people, namely Metuge, Montepuez, Mueda, Nangade and Pemba. In 2022, the humanitarian response in northern Mozambique will target 1.2 million people in the most urgent need of assistance and protection in Cabo Delgado, Nampula and Niassa. The 2022 Humanitarian Response Plan (HRP) seeks US\$388.5M to deliver life-saving, and life-sustaining assistance and protection to 1.1 million people in the northern provinces of Cabo Delgado, Nampula and Niassa and provinces.

Apart from conflict in the northern region, communities in Mozambique have also been suffering from the impact of a number of natural disaster recorded in early 2022, including tropical storms and tropical cyclones. Tropical Cyclone Gombe was the 3rd cyclone in Mozambique in the space of three months. It hit the country on 11 March as Category 3 cyclone in the wake of two extreme weather events (Tropical Storm Ana and Tropical Depression Dumako) which had struck six weeks prior affecting 200,000 people.

Tropical Cyclone Gombe left a trail of damage and devastation on its path. The cyclone affected 736,000 people and displaced some 23,000 people causing extensive damage to infrastructure. While the Government's preparedness and response efforts played a critical role in preventing further loss of lives and quickly responding to the unfolding needs of the displaced people who had lost everything, the rising humanitarian needs outstripped the capacity of humanitarian organizations to respond. The Gombe Emergency Response Plan (ERP) seeks US\$48.07M to deliver life-saving, and life-sustaining assistance and protection to 387K people in Nampula, Sofala and Zambezia provinces in the period April to September 2022.

### KEY FIGURES



### 2022 HRP & ERP FUNDING (31 May 2022)<sup>4</sup>

Number of organizations who have been responding up to April 2022

\$436.6M<sup>5</sup>    \$388.5M    \$48.1M    \$71.2M    16%    \$365.4M

Total requirements

HRP requirements

Gombe ERP requirements

Total Funds Mobilized

Total funded

Unmet Funding

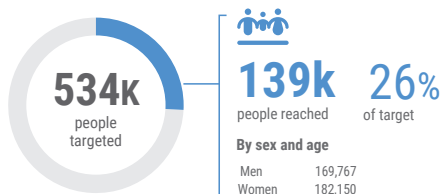
Cluster	Required	Funded	Unmet
Camp Coordination and Camp Management	\$12.4m	\$0	\$12.4m
Education	\$32m	\$0	\$32m
Food Security and Livelihoods	\$197.2m	\$15.6m	\$181.6m
Health	\$16.4m	\$3.0m	\$13.4m
Nutrition	\$23.4m	\$0	\$23.4m
Protection	\$44m	\$2.7m	\$41.3m
Shelter/ NFIs	\$48.5m	\$1.4m	\$47.4m
WASH	\$33.9m	\$2.0m	\$31.9m
Refugee Response	\$15.3m	\$0	\$15.3m
Coordination & Common Services	\$7.2m	\$1.2m	\$6.0m
Logistics	\$6.25m	\$3.6k	\$2.7m

\* Not specified funding: \$42m

## RESPONSE OVERVIEW<sup>6</sup>

### CCCM

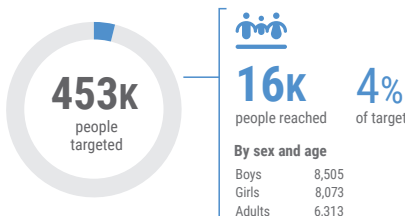
**905k** people in need



138,512 People with access to CCCM services.  
87,087 People with access to site coordination structures.  
64,207 People with access to Complaints and feedback mechanisms (including information desks).

### EDUCATION

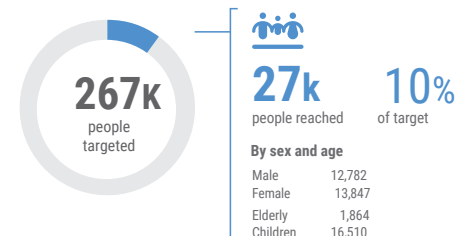
**549k** people in need



16,578 Children Reached through Accelerated Learning.  
286 Adults Training in TICCS/ Accelerated Learning.

### SHELTER /NFIs

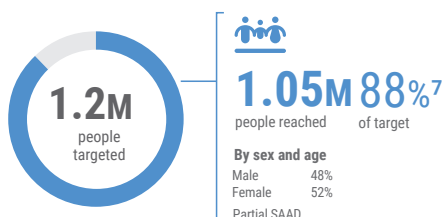
**1.6M** people in need



12,920 People assisted with basic Emergency Shelter and NFIs kit  
9,180 People assisted with NFIs only

### FOOD SECURITY & LIVELIHOODS

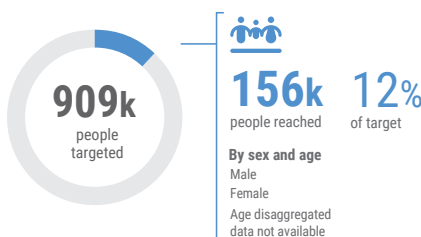
**1.8M** people in need



962,857 People reached with food distribution  
325,714 People reached with livelihood assistance

### HEALTH

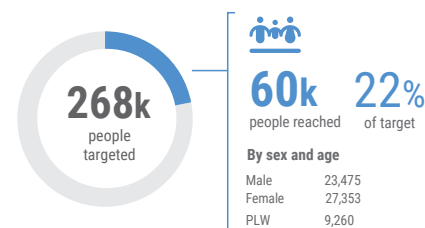
**1.6M** people in need



31,895 Women of Child Bearing Age(WCBA) received modern contraceptives  
25,453 Deliveries assisted by skilled health workers  
2,692 PLHIV >15 yrs not on ART  
588 Survivors of SGBV receiving clinical care for rape  
1,406 Children 6months to 15yrs received measles vaccination  
248 People trained and deployed in Rapid Response team (RRT)

### NUTRITION

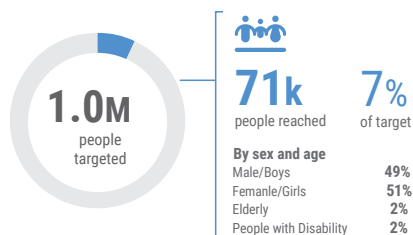
**457k** people in need



50,828 Children under 5 children admitted for treatment (SAM and MAM) in the management of acute malnutrition programme (PRN)  
45,694 Children under 5 screening for acute malnutrition  
9,260 Pregnant and Lactating Women (PLWs) admitted for treatment (SAM and MAM) in the management of acute malnutrition programme (PRN)  
580 Pregnant and Lactating women screening of acute malnutrition

### PROTECTION

**1.9M** people in need



1,685 IDPs accessed services on civil documentation  
668 Girls and boys participating in sustained and structured psychosocial support and child protection programmes  
386 women and girls provided with psychosocial support at women and girls safe spaces  
217 GBV survivors provided assistance and support (eg. Health care, MHPSS)

#### GENERAL PROTECTION

**38,691** People reached with protection services

#### CHILD PROTECTION

**24,480** Children reached

#### GENDER-BASED VIOLENCE

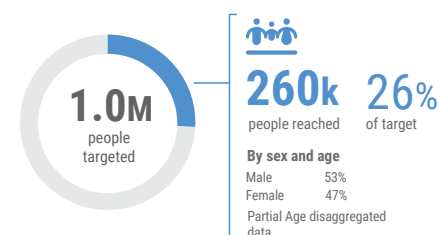
**12,813** People reached

#### PSEA

**891** People reached PSEA services

### WASH

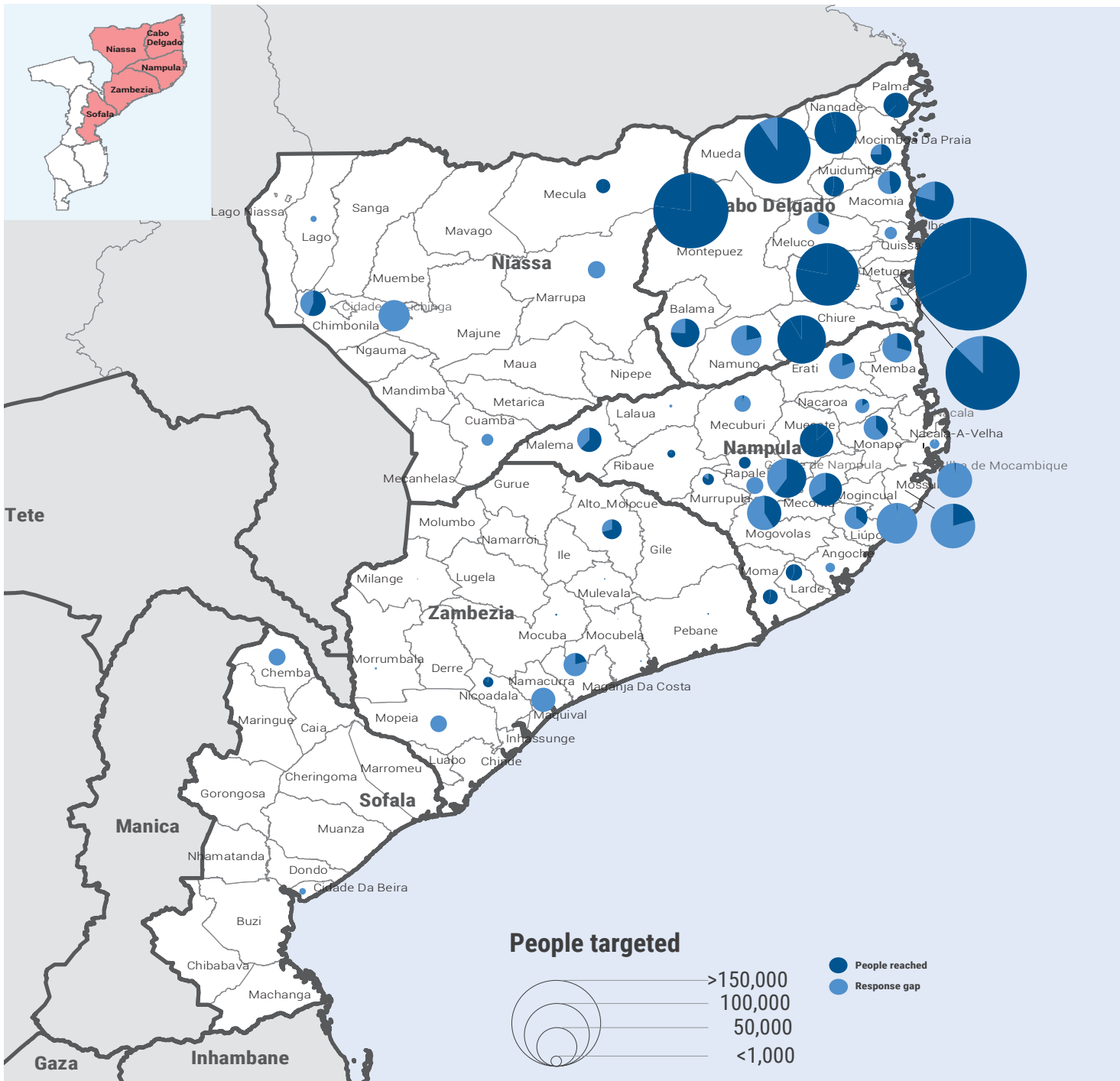
**1.3M** people in need



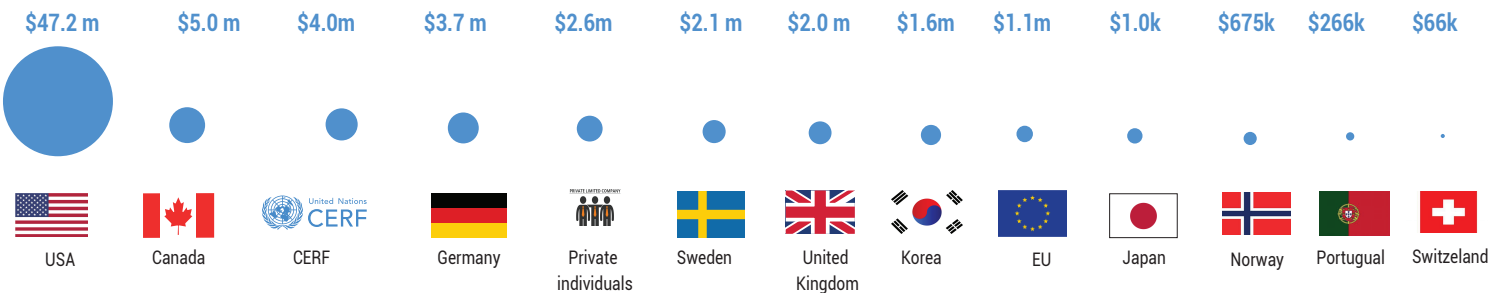
228,160 People with access to safe drinking water  
131,950 People with access to sanitation facilities  
225,270 People reached with sanitation and hygiene messages

| 6. Response overview figures for both HRP & Gombe ERP analysed through cluster 5Ws submissions with core cluster specific monitoring indicators highlighted. | 7. Food security targets 940k people every month to receive food assistance.

PEOPLE TARGETED AND REACHED BY DISTRICT BETWEEN JANUARY 2022 AND APRIL 2022



TOP 13 DONORS<sup>4</sup> numbers in US\$ millions



4. As recorded on OCHA Financial Tracking Service (<https://fts.unocha.org/countries/152/summary/2022>).  
The boundaries and names shown and the designations used on this map do not imply official endorsement or acceptance by the United Nations